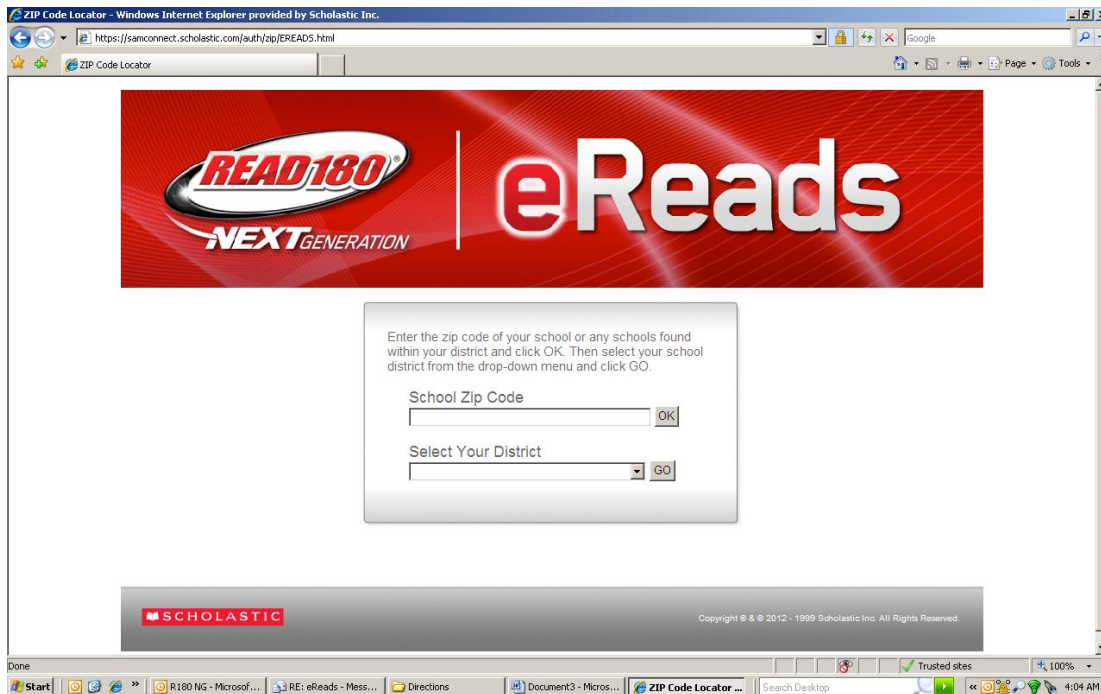


Accessing eReads via the web address



Go to: www.read180.com/ereads

On the student's first log-in, he or she will have to:

1. Enter the zip code of his or her school district and click OK
2. Select the school district name from the pull down menu and click GO
3. Type in his or her READ 180 username and password
4. Click Go On

On subsequent log-ins, your student will need to:

1. Type in his or her READ 180 username and password
2. Click Go On

